

## WHAT'S ON AT THE BROOKLYN COMMUNITY CENTRE

BEFORE SCHOOL CARE	7.30 to 8.30am every school day for school-age children. For details and bookings, phone Diva on 027 410 9949
SPCA ADOPT A PET	First Saturday of the month from 12 to 3pm Cats & kittens for adoption.
AFTER SCHOOL CARE	3 to 6pm for primary school kids . Contact Adam Hendry on 385 0089
HOLIDAY PROGRAMMES	8.30am - 6pm during school holidays. Bookings essential. Ph. 385 0089
ALZHEIMERS WELLINGTON	Meet in the RSA room on the 4 <sup>th</sup> Wednesday of the month Phone 387 8345 for details.
BROOKLYN WALKERS	Mondays - meet outside the Brooklyn Library at 9.30am. Phone Susannah on 384 7412 for information.
BROWNIES	Mondays 6pm to 7.30pm in school terms. Phone Margaret on 389 3028
DANCE ACADEMY	Fun Fairy Ballet for preschoolers & school children Tuesdays 2.45 to 6pm Contact Fiona on 476 7046 or 021 721-020
DANISH MUSIC PLAYGROUP	Sundays (fortnightly) 10am to 11am. Phone Karen on 380 1929
PILATES	Mondays 9.15 to 10.00am. Fridays 9.30 to 11.30am. Ph. Beth 389 1599
INDIAN COOKING CLASSES	Saturdays and Sundays 6pm. Bookings and enquiries to Anu on 021 0269 7038 <a href="mailto:indiancooking@xtra.co.nz">indiancooking@xtra.co.nz</a>
PORSE PLAYGROUP	Wednesdays 9am to 11.30 in the hall & lounge Ph. Hestia 801 6814 <a href="mailto:hestia.kelleher@porse.co.nz">hestia.kelleher@porse.co.nz</a>
REMBUDEN KARATE	<b>Beginners:</b> Wednesdays 5.30 to 6.15pm & Thursdays 4.45 to 5.30pm <b>Seniors:</b> Wednesdays 6 to 7pm & Thursdays 5.30 to 6.30pm <b>New classes starting in June</b> - Kardio Karate and Karate Stretch. A no fuss 30mins pad work class. Punch that pad and get fit, or gently tone and stretch your body. No experience required. <b>Evening Kardio Karate:</b> Wednesdays 7.30 to 8pm. <b>Day Kardio Karate:</b> Tuesdays 10.45 to 11.15am & 12noon to 12.30pm <b>Karate Stretch:</b> Tuesdays 11.20 to 11.50am. For more details, contact Patricia on 383 9371 or 027 297 6049
ROCK 'N' ROLL	Thursday evenings. Children's classes 6.30 to 7pm Adult classes 7pm to 8pm. General dancing from 8pm to 10pm. Contact Gavin on 934 5442 or Email : <a href="mailto:gavinmclashan.co.nz">gavinmclashan.co.nz</a>
ST JOHN CADETS	Tuesdays 6.30 to 8pm in the hall. Ph. Michael 385 0319 or 027 630 3063
TABLE TENNIS	Wednesdays 8.15pm till late. Ph. Philip 934 7445 or Gwen 384 9060
TAI CHI CLASSES	6.30pm Thursdays. First class free, \$5 casual or \$40 for 10 classes. Contact Ferne McKenzie 3891 433 or <a href="mailto:ferne.david@xtra.co.nz">ferne.david@xtra.co.nz</a>
BROOKLYN COMMUNITY INDOOR MARKET	LAST SATURDAY OF THE MONTH. Next market is Saturday 29 June 9.30am to 1pm. Tables only \$10. Phone 384 6799

**Brooklyn Community Centre & Vogelmorn Hall can be hired for functions.**  
Office hours: 8.30am - 1.30pm - Monday to Friday  
Phone 384 6799. E-mail: [brooklynca@paradise.net.nz](mailto:brooklynca@paradise.net.nz)

# Brooklyn Tattler



Issue 244

June 2013

## VOGELMORN HALL IS BUZZING

With its high ceiling, good acoustics and stage, it's an excellent venue. Vogelmorn Hall has hosted some great events since the Brooklyn Community Association took over its management this year.

There is still plenty of room for bookings, particularly for regular group meetings during the day or weekday evenings.

The Vogelmorn Hall complements the Brooklyn Community Centre with its variety of spaces, so no matter what size or type of function you wish to have, it can be catered for locally with just one phone call.

Contact **Euan on 384 6799** and talk to him about which venue is best for your function. He can show you round both of them.

*Tattler is published monthly by the Brooklyn Community Association Inc. 18 Harrison Street, Brooklyn. Association members accept no liability for the contents which have been prepared in good faith. The Association members accept no liability for the contents which have been prepared in good faith.*



## Co-ordinator's Corner

Hi Everyone

By the time you read this, the old boy's brick toilet block, located on the edge of the Brooklyn Community Centre playground, will be gone. It was demolished on Saturday 8 June. In its place a sloping section will be created from the top of Harrison Street, down to a new boundary fence. A shed will be erected for the Brooklyn Community Orchard to use for storage of tools and gardening materials, and a tap installed for watering of plants.

Council is currently working together with Capacity (the regional agency that delivers and manages water supply) to install a series of community based water tanks, to ensure that drinking water is available in an emergency. The project will take place over 4 years with up to 40 tanks placed throughout Wellington. Each tank will hold up to 25,000 litres, and will be installed and maintained by Capacity and plumbed into the mains, so they are full at all times to provide portable water. The water can be used for local groups, such as the Community Orchard. There are plans to locate a tank close to the Brooklyn Community Centre and Vogelmorn Hall. Engineers will be on both sites soon to start technical drawing and survey work.

Vogelmorn Hall has been the venue for a number of events throughout May. Labour leader David Shearer held a town hall style meeting on Wednesday 8 May at 11am. The hall was packed with people, plus a strong media contingent.

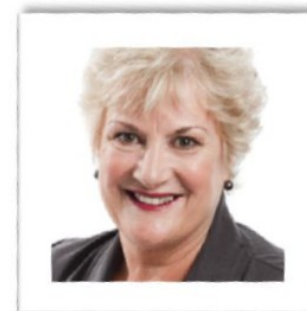
Brooklyn Playcentre ran their fundraiser event on Friday 17 May and managed to raise over \$4,500. Then on Saturday 18 May, the first in a series of Old Hall Gigs took place, with an evening of music, poetry and sculpture. Old Hall Gigs aims to encourage people to visit older style halls throughout Wellington. Funding was received through Wellington City Council's Creative Communities scheme. For more information visit [www.oldhallgigs.org.nz](http://www.oldhallgigs.org.nz)

New to Vogelmorn Hall this month, is Feldenkrais. One hour classes teaching the Feldenkrais method of body movement, will be held three times per week during school terms. You can join a class either on Monday at 10am or 7pm and Wednesday at 10am. Local tutor contact is Barbara, phone: 384 5249. Email: [behardy@clear.net.nz](mailto:behardy@clear.net.nz) Details available on Feldenkrais at [www.feldenkrais.org.nz](http://www.feldenkrais.org.nz)

We are just putting the finishing touches to our new website, which will help raise the profile of the Brooklyn Community Centre and Vogelmorn Hall, plus provide information on regular groups and services we run, such as Afterschool Care and Holiday Programmes. Also included will be links to local Brooklyn Community groups. More details in the July Tattler.

Have a great month

Euan Harris  
Co-ordinator



**Grant  
ROBERTSON**

**Your MP in Wellington Central**

220 Willis Street, Wellington

P 04 801 8079

E [office@grantrobertson.co.nz](mailto:office@grantrobertson.co.nz)



Authorised by Grant Robertson, 220 Willis Street, Wellington.

**Annette  
KING**

**Your MP in Rongotai**

25 Kilbirnie Plaza, Kilbirnie

P 04 387 2587

E [rongotai.mp@parliament.govt.nz](mailto:rongotai.mp@parliament.govt.nz)

Authorised by Annette King, 25 Kilbirnie Plaza, Kilbirnie.

- **If Pandas can Kung Fu, so can you!**
- **Do you need or lack the motivation to exercise? - Try Kung Fu!**

**Fitness with a purpose.**

- Traditional Shaolin Kung Fu is for self defense and defense of others in need. It is also for interest, fitness and health.
- You will learn a traditional martial art in a fun, safe environment. We will motivate you. We will help you to get fit, lose weight, improve your co-ordination, flexibility and relieve work stress.
- This will help to take your children away from the Xbox and TV. As this is a martial art, it will have the associated discipline and etiquette.
- You can take your martial arts journey as far as you need/wish.
- Cost: \$8.00/\$5.00 per class. There is no obligation to join straight away – we want you to try several classes before joining anyway. We have made the first class free.
- Class times – Adults - Mondays 6-8 pm, Fridays 5.30- 7.30 pm.  
Children - Mondays 4.45-5.45pm, Fridays 4.30 – 5.30 pm
- Where: Tanera Park Club rooms, 2 Tanera Cres, Brooklyn

**Rob Young**

Instructor, Kung Fu School (Wellington)

[www.shaolinkungfu.co.nz](http://www.shaolinkungfu.co.nz)

For enquiries, email Scott. [wellington@shaolinkungfu.co.nz](mailto:wellington@shaolinkungfu.co.nz)



**Copy Deadline for the next Brooklyn Tattler is 28 June 2013**

Email: [kunderwood@leaders.co.nz](mailto:kunderwood@leaders.co.nz) with your contribution.


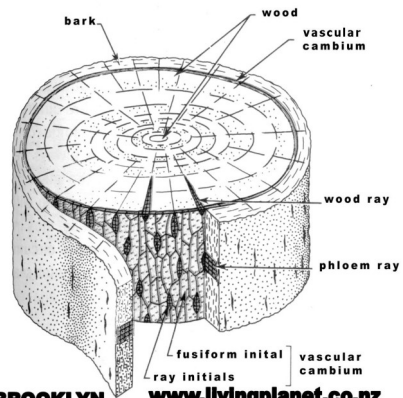
## Friends of Central Park

In April a group of Geocachers <http://www.geocaching.com/> approached Wellington City Council with an offer of help to celebrate Earth Day (<http://www.earthday.org/faceofclimate/>).

Friends of Central Park was lucky enough to be the beneficiary of this offer, and on one very wet Sunday, 16 enthusiastic Geocachers arrived at the entrance to Central Park. Having previously checked out the 'high rubbish' areas of the park we split into two groups; one starting at the Washington Avenue entrance and following the fence line down the hill and the other following the stream from the top down to the Brooklyn Road entrance and then back up Ohio Road.

Over the next two hours we collected 30 sacks of rubbish, mainly glass, plastic bottles and cans, plus some household rubbish. Clearly some people mistake the park boundaries as a communal rubbish tip! The park is now considerably more beautiful thanks to the local Geocachers. FoCP appreciates anyone collecting rubbish as they walk through the park and using the bins at the playground and Brooklyn Road entrance.

Friends of Central Park meet on the last Sunday of every month; join us from 10.00 – 12.00 at the bridge nearest the main gates at the bottom of the park. For more info, contact Barbara at [behardy@clear.net.nz](mailto:behardy@clear.net.nz) or 3845249 or Debbie at [debbie\\_vanh@yahoo.com](mailto:debbie_vanh@yahoo.com)

**BROOKLYN** [www.livingplanet.co.nz](http://www.livingplanet.co.nz)  
**0800 4 TREE DR.**  
**971 8583**



**House Washing**  
**From \$300**

**Reasonable rates**  
**Free quotes**

**Phone Robbie 389 3261**



## RESOURCE CENTRE NEWS

36 Jefferson Street

PHONE: 384 4299

OPEN: Weekdays 9am to 4pm

CONTACT US FOR;

PLUNKET:

Clinics: Tues 9am-4pm

Wed 9am-4pm

Ring for an appointment on 384 5253

PODIATRIST;

Every second Friday

9.00am-11.30am

Ring for an appointment on 384 4299

MAH JONG;

Monday 1pm-3pm

Beginners welcome

COMMUNITY LUNCH;

Inexpensive lunch for everybody

children welcome

Tuesday 12noon-1pm

THURSDAY:

Spinners and Knitters

1st and 3rd Thursdays 1-4pm.

FRIDAY CIRCLE: \$10

Cars will collect you if needed.

Programme:

Craft activities 9.30am

Morning Tea 10 am

Lunch 12 noon

Arthritic Exercise 1.30pm

Guest Speaker 2pm

Afternoon Tea 3pm

**Speakers for June 2013**

14 June: Martina Verberkt  
 "The love of dolls"

21 June : Mid winter Christmas lunch  
 "Andre Reiu Christmas Songs"

28 June: David Wilkie  
 "War veterans' return to the Pacific (Noumea) for Anzac Day"

5 July: John Bishop  
 "Protection for the town belt" (over a century of achievement and prospects for the future)

We are holding our A.G.M on Sunday the 30 June at 2pm. Our guest speakers for this year are Barbara Hardy; Shona McCahon & Debbie Vanhamelveld, (Friends of Central Park). We look forward to their talk.

The A.G.M raffles will be drawn on the day. Afternoon tea will be served following our meeting. We hope to have your support on the 30 June.

We are very pleased to have Muno Richards joining our centre. Muno is a speech therapist. Her clinics will be held on Wednesdays & alternate Thursdays. Please give me a call and I can put you in touch with her.

Plunket are changing their clinic days to Mondays & Tuesdays with home visits on a Friday. This will happen from August. We are on the lookout for a new piano. If you have one that you no longer use, you might consider donating it to the centre.

We hope to see you at the centre real soon.

Jenny



# GROUP ROUNDUP

## Brooklyn Walkers

Brooklyn Walkers meet Monday mornings outside the Brooklyn Library. The walks are varied covering most of Wellington and are easily suitable for senior walkers. Our group is full of friendly people so do join us. For more information call Susannah: 384 7412 or Clare 384 9054.

- 17 Jun: Walk to Adelaide Rd through Wellington High School, No 3 bus to Kilbirnie, walk around the bays to City. (9.30 start)
- 24 Jun: Pukerua Bay to Mana via Te Ara Harakeke Walkway (9.18 No 7 bus, 9.44 train)
- 1 Jul: Walk through Wellington High School, Wellington Hospital grounds, Alexandra Rd, City. (9.30 start)
- 8 Jul: Walk to Wallace St, bus to Karori, walk Karori Cemetery, Kaiwharawhara Stream, Otari Wilton Bush. (9.10 start for 9.35 No 18 bus at Wallace St)

## Brooklyn Table Tennis

The Brooklyn Table Tennis Club plays from 8.15pm till late every Wednesday evening right up until Christmas.

A small, friendly group, we welcome new members of all ages and abilities. We have three tables with good lighting in a pleasant hall. Balls



are supplied and a number of club bats are available for use if you do not have your own. For further information phone: Philip on 934 7445 or Gwen 384 9060.

## Brooklyn Scouts

Brooklyn Scouts, Cubs and Keas meet in the Scout Hall in Harrison Street, Brooklyn. Keas 5-7 years – Tuesdays 5.30-6.30pm  
Cubs 7-11 years – Mondays 6.30-8.00pm  
Scouts 11-14 years – Tuesdays 7.00-9.00pm.  
For more information contact Gavin McGlashan [gavin@mcglashan.co.nz](mailto:gavin@mcglashan.co.nz) phone 939 3222

## Brooklyn Garden Club

The Club meets at 7.30pm on the first Wednesday each month at the Brooklyn Resource Centre at 36 Jefferson Street. Come and hear interesting and informative guest speakers, share gardening tips, plant cuttings, and enjoy the company of our small friendly group. New members and new ideas are always welcome. For further details contact: Barbara on 389 4307.

## Turbine Talkers Toastmasters Club

Turbine Talkers is the local chapter of Toastmasters International, and holds fortnightly meetings to teach and practice the skills of effective communication in a supportive learning environment.

Turbine Talkers meets every 2nd Tuesday, at St Matthews Church on Washington Avenue. For further details, phone: Caroline on 971 8494

## Brooklyn Brownies, Guides & Pippins

**Brownies** meet Monday evening during school terms, from 6.00-7.30pm, in the Brooklyn Community Centre, Harrison St. We welcome any girl between the ages of 7 - 9 1/2 years of age to join Brownies for fun, friendship, plus many other activities. Ring Margaret 389 3028 for details.

**Brooklyn Pippins** meet Monday evening during term time 6-7pm at the Reformed Church, end of Harrison St. Contact Nicola Burdon on 04 971 1265

**Brooklyn Guides** meet Mondays 6.30-8.00pm at Reformed Church, Harrison St. Ph. Kathryn Marsh 802 5049

## Friends of Owhiro Stream

Drivers down Ohiro Road will have noticed the vast improvement over the past few years to the Owhiro Stream and its environs achieved by this local group. Work is on-going and if you would like to find out more about it, call: Paul – 389 8545 or Martin – 389 8995

## Brooklyn Community Association

Brooklyn Community Centre & Vogelmorn Hall for hire, and plenty of activities for all. See the back page of this Tattler for times. For further information and bookings, contact Euan at the Brooklyn Community Centre ph. 384 6799. [brooklynca@paradise.net.nz](mailto:brooklynca@paradise.net.nz)

## Central Park Care Group

Our working bee is the last Sunday of the month from 10am to noon. Meet at the picnic table next to the big bridge, 2 mins from the main gate. Come along for great conversations, meet new people, fab morning tea provided and contribute to the care of Central Park!

No formal meeting in January. Contact Debbie for informal times.

Email Debbie on [debbie\\_vanh@yahoo.com](mailto:debbie_vanh@yahoo.com)

## Brooklyn Local History Group

The next Brooklyn Local History Group meetings are at Brooklyn Library @2pm. on the following dates:  
15 June, 27 July, 7 September, 19 October, 30 November.

Everyone is welcome to attend. For more information contact Sharon Macintyre: daytime: 3871487 or email [sharon.macintyre42@gmail.com](mailto:sharon.macintyre42@gmail.com) or Chris Rabey: 384 9293

## School News

Open Days for secondary schools seem to come earlier each year. Some are now at weekends giving working parents more flexibility. Solway and Scots Colleges have already held theirs. Wellington High's will be held on Monday 17 June at 6pm, Wellington College on Saturday 22 June at 10.30am and Rongotai College on Tuesday 25 June. All schools are urging parents who have pre-schoolers turning 5 over the next few months to notify their school of choice so decisions can be made for opening new New Entrants classes.

**Ridgway School** welcomed the Education Review Office visitors early in May, with a Powhiri and a speech by David Bagnall on behalf of the Board of Trustees. The visit was highly successful with lots of progress evident. Staff and students are looking forward to a new Principal, Kathryn Smith, over next few months.

**St. Bernard's School** along with all other Catholic schools, have celebrated "Catholic Schools' Day" with Mass at the church. Following this St. Bernard's invited parents to afternoon tea at the school. A fundraising school disco was held in June. Other fundraising has been the sale of popular "Entertainment Books".

The disruptions for **Brooklyn School** due to its "leaky buildings" has further been delayed until the end of September. Coming up for the School is the celebration of Matariki, the Maori New Year. Matariki begins with the first new moon after the rising of the Pleiades star cluster in our skies - this year on 12 June. Celebrations at Brooklyn begin at 6pm with lots of activities at school, and a talk by an astronomer. Walking buses will start at 5.45pm with free glow sticks for the children. At 8.30pm the "Brooklyn Sparkle" will begin with flashing lights from Brooklyn School, followed by lights flashing from around Brooklyn - a fun way to celebrate an important Maori event.

Term 2 ends on 12 July 2013  
Term 3 starts on 29 July 2013.

A new, **free Booklovers Club** for kids aged 9-13 has started in the Childrens Bookshop in Kilbirnie. Meeting on the first Friday of each month, 4-5pm, the group will discuss a different genre each time. There will be games, quizzes and prizes and a \$20 shop voucher for every 5 meetings members attend. There will even be hot chocolate served in the winter! Contact The Childrens Bookshop on 04 387 3905 or email [books@thechildrensbookshop.co.nz](mailto:books@thechildrensbookshop.co.nz)

## Eye Have a Spell Chequer

It came with my pea sea  
It plainly marques four my revue  
Miss steaks eye kin knot sea.

Eye strike a key and type a word  
And weight four it two say  
Weather eye am wrong oar write  
It shows me strait aweigh.

As soon as a mist ache is maid  
It nose bee fore two long  
And eye can put the error rite  
Its rare lea ever wrong.

Eye have run this poem threw it  
I am shore yore pleased two no  
Its letter perfect awl the weigh  
My chequer tolled me sew.

Sauce unknown



## What's on at the Movies

Based on the best-selling novel, **The Reluctant Fundamentalist** is a riveting international thriller. It follows the story of a young Pakistani man, chasing corporate success on Wall Street, who ultimately finds himself embroiled in a conflict between his American Dream, a hostage crisis, and the enduring call of his family's homeland.

**Starring** Kate Hudson, Kiefer Sutherland, Om Puri, Liev Schreiber, Riz Ahmed,

**M** Contains violence, offensive language & sex scenes  
**2hrs 10mins** duration



## Brooklyn Hair Zone

Previously operating as  
Rosemaries Hair Design

203 Ohiro Road



**FOR PROFESSIONAL  
ADVICE & SERVICE**

(Over 10 years' experience)  
Stockists of Joico products  
Free parking available

Open Tuesday to Saturday



Licensed under the REAA 2008

**Katie Underwood**  
027 248 2061, 04 894 3717  
**RE/MAX Leaders**

**Call me to sell your home!**

Local Salesperson, Local Knowledge

[kunderwood@leaders.co.nz](mailto:kunderwood@leaders.co.nz)

[www.leaders.co.nz/katieunderwood](http://www.leaders.co.nz/katieunderwood)



## Growing good food in Brooklyn

If you have a passion for local food and community then come and be a part of the Brooklyn Food Group. We run share gardens and a community orchard growing food together and learning from each other to fill our bellies and build our skills and community.

### There are plenty of ways for you to get involved.

- Do you have a garden you want to share?
- Do you want to be part of a shared garden?
- Do you want to help out at the community orchard working bees?
- Do you want to find out about upcoming workshops and events?

We welcome new gardeners and gardens, so if you want to get your hands dirty and help build a good food community at the same time get in touch.

[thebrooklynfoodgroup@gmail.com](mailto:thebrooklynfoodgroup@gmail.com)  
and [www.facebook.com/BrooklynFoodGroupNZ](http://www.facebook.com/BrooklynFoodGroupNZ)

### Interested in our next workshop?

'Prune in June': fruit tree pruning on the 16th of June



Garage for rent in Garfield Street  
Single, dry and lockable  
\$45 per week negotiable  
Phone: 934 9204 or 027 627 8642



**Brooklyn Kindergarten** currently has spaces for children from 2 1/2 to 5 years old. Come check us out at 62 Todman St. or give us a call on 385 7313.



### Baby Sitting/Childcare

Jim Stanton is available for Childcare. She has experience and offers reasonable rates. She is also able to do mealtimes, naps and play time. Contact her on [contactjimstanton@gmail.com](mailto:contactjimstanton@gmail.com) or 021 174 7703



### Keep your house warm and cosy this winter...

Seasoned Pine: \$45 per 1/3m<sup>3</sup> scoop  
\$120 per cubic metre  
Manuka/Jarraah: \$75 per 1/3m<sup>3</sup> scoop  
\$200 per cubic metre

Use our free trailers or get your wood delivered for \$30 (Brooklyn area only)

Free delivery when purchasing 4 cubic metres (just over 1 cord)

### Bedrock Landscaping Supplies

Tel: 383 7268

4 Landfill Road, Happy Valley

Open every day

**bedrock**

## Brooklyn Residents Association (BRAI)

By the time you read this, the BRAI will have held it's AGM and we look forward to further engagement with both local and regional councils, in their dealings with important local and city wide issues which impact on greater Brooklyn residents.

These include the earthquake strengthening of the Brooklyn Library; the proposed increased weekend bus services in Kowhai Park / Panorama Heights (in 2014); the expansion of size and life times at the local waste dumps / landfill(s) and the corresponding heavy traffic through the Brooklyn village amongst other matters.

The not so good news is, that the WCC Library Service did say they, as have all branches of local and central government, have pressure to cut expenditure. They are looking at ending the Monday evening service. We will need to keep a close eye on how this progresses.

BRAI acts for, represents and advocates for all the residents of Brooklyn. We are very keen to stay a relevant body both for local residents, to raise concerns about matters and contribute to the retention of services and community facilities, improvement of our suburb (and hopefully surrounding areas) and to provide a conduit for two way communication between Wellington City Council and Greater Wellington Regional Council, amongst others. We would encourage like minded people to join and do our best to advance and improve local issues. Looking forward, we invite you to our next meeting on the 17 July at 7pm

in the Brooklyn Resource Centre at 36 Jefferson Street. We look forward to seeing you there.

Simon McLellan Chair

04 972 5102

Carl Savage Secretary

04 803 1767

[carl.savage@paradise.net.nz](mailto:carl.savage@paradise.net.nz)



## Gone Gone Gone

It was a sad day on Saturday last when the boys toilet in the grounds of the Community Centre was demolished. It was a piece of Brooklyn history, doing no one any harm and one of many fast disappearing under the current council. As I understand it, the council was prepared to pay for it to be demolished but wasn't prepared to pay for it to be restored to a useful condition. What will be demolished next I wonder - the bus stop at Helen Street? The bus stop in Harrison St? My guess is they will be demolished and replaced with an advertising box with a few seats with no charm and which provides no shelter at all. (Ed)





## Councillor Corner

At the time of writing, I'm looking forward to the community meeting this coming week to look at Brooklyn's future. The discussion is timely as we look at options to earthquake strengthen the Brooklyn Library. Brooklyn is home to a strong community, some great facilities (including The Penthouse) and lovely homes so future plans need to build on those strengths.

Also at the time of writing, Council is preparing to debate whether we should amalgamate with the rest of the Wellington region. My firm view is that the public should decide by poll, not the politicians who necessarily have an interest in the matter. This poll is likely to be held next year. The Local Government Commission will decide on the option that will be put up against the status quo (i.e. the existing arrangements). I can see both sides of the argument: one council would make it easier in some ways to make decisions but would also make it harder to engage with decision-makers given the size of an amalgamated Wellington. Anyway, over to the voters.

On the matter of elections, we will be having one in October. If you want to

participate (and I would encourage you irrespective of your views), you must be enrolled. To do this, go to [www.elections.org.nz](http://www.elections.org.nz) or call 0800 36 76 56.

Contact: Iona on 384-3382/021-227-8509

### Brooklyn Scout Jamboree Fundraiser Pride and Prejudice night!!!

Brooklyn Scouts is proud to present a fundraising opportunity with a difference. Pride and Prejudice is celebrating its 200<sup>th</sup> anniversary this year and Stagecraft has produced a fresh new theatrical adaptation of literature's original romantic comedy.

We've booked the house on Friday 28 June – the play is on at the Gryphon Theatre, 22 Ghuznee Street. Tickets are \$30 and include the play, plus a glass of wine and nibbles.

All funds raised will go to helping Brooklyn Scouts get to jamboree.

People who want tickets can email me at [gillianmay@paradise.net.nz](mailto:gillianmay@paradise.net.nz) before Wednesday 19 June.

**Gillian Boyes, Brooklyn Scout Parent Leaders Committee Secretary**

## CARPET LAYER

Installation of new or second hand carpets.

Relays, repairs and maintenance.

All materials can be supplied. Free quotes.

Contact **John** on 0274 426915 or 381 2216

## FOOS

(Friends of Owhiro Stream)

Conservation groups all around Wellington are now heading into the planting season. This year it looks as if we will have rather less plants to deal with, as although we have been working just as hard as usual, we still do not have all the plants transferred from root trainers to PB3 bags, and consequently some of them will be better kept at the nursery to grow for another year. Planting days/ working bees are held on the second Saturdays of the month, and this year's big, all day, planting day +barbecue will be held on Saturday 13 July. This will again be at the site of the old bagel factory, which is very suitable for families and children - so if you would like to give your kids a taste of community and/or environmental work, put this date in your diary.

Some members have been very busy over the last month or two preparing a submission on the proposed resource consent for C&D landfill, who wish to extend their operations further up the valley on the south side of Landfill Rd. While the management of C&D are strongly committed to maintaining the quality of the stream water, filling higher

up the valley would mean the loss of some high quality habitat for fish and invertebrates - and some very picturesque stream and bush environment. Marion, our limnologist (never heard of one? Limnology is 'the study of bodies of fresh water with reference to plant and animal life, physical properties etc.' So now you know.) collected samples from the upper stream of the larvae of caddis flies, mayflies, and stone flies, all indicators of a healthy stream, in far greater numbers than appear in the main stream. For this reason FOOS, and other organisations, are making submissions against the proposal as it stands. As in the recent Denniston Plateau decision, if the consent were to be granted, the Owhiro Stream would benefit by significant spending for planting or other maintenance on its lower reaches.

Further ahead, at some time in the future the Council also wishes to extend their tip operations further up their valley into what is a probably an even more significant piece of stream and regenerating bush, so there is plenty of work ahead!

Janet

## Living Narratives Counselling and Psychotherapy

Are you experiencing personal distress and/or problems in relationships?  
Or, are you questioning your direction and purpose in life?

Counselling is a way you can enquire into what is going on and make positive changes in your life.  
Please explore my website for more information. Call, text or email for an appointment.

Sessions available in Brooklyn

Tel: 027 781 4491

[www.livingnarratives.com](http://www.livingnarratives.com)

[raquel@livingnarratives.com](mailto:raquel@livingnarratives.com)

## Lines From The Library

Hi there. It's a big call taking over the monthly Tattler library bulletin from Odette, as she has done such a great job, but I have been asked to rise to the challenge so here goes.....

I have been surprised by the number of patrons who are unaware of the library website and we are very proud of our online services so I thought I would use my first article to remind keen library users of what is available in the digital world. Go to [www.wcl.govt.nz](http://www.wcl.govt.nz) and you will find your library home page. This is a portal to a LOT of information and services.... all concerning books, music and films. Be warned – this is a rabbit hole! The purple menu bar across the top is your entry point and I urge anyone interested to go exploring. Placing your cursor over each heading displays a drop down menu - one click and your journey begins.

Space allows only a brief guide so, for now, I will explain one service that you may find extra useful. Place your cursor on the purple menu bar across the top of the page over the button called 'Search' and from the dropdown menu select 'Easyfind Catalogue'. There are two versions of the catalogue – one is called 'Classic', which is the one most people are familiar with, however the 'Easyfind' version is just that. It has been designed on Google search techniques and is far less pedantic than the Classic Catalogue. For instance, there is no need to put the surname of an author before the first name, John' –

Gray' and all of the author's works will appear. Click on the title you are interested in and the details will come up including how many copies we have and if they are on loan or not.

If you want to reserve the title, just click the big blue button on the right, put in your card details, check that the 'Hold Placed' message appears and it is all done. Searches can also be placed by title or subject, which is very handy for children's homework assignments. Searches can also be fine tuned by clicking down the right hand side of the page under the heading 'Refine'. This works for DVDs, CDs and any item the library holds, so let your fingers do the walking and happy exploring!

John

### Diamond Anniversary

Congratulations to

**Terry and Ann Long**

of Vogeltown, who were married on 20 June 1953 at All Saints Church, Hataitai.

Terry and Ann will be celebrating this special occasion with their 3 daughters, 9 grandchildren, 3 great grandchildren and other family and friends  
Love to you both, from all the family xx



## Brooklyn History

The Penthouse Theatre as we know it, was originally built as the Vogue Theatre, and was used for a number of different activities, besides movie pictures.

The 1960's radio star, Jack Maybury, and later his brother John, visited a few times to record live quiz shows he and his wife Dorothy-Jean compered. They were similar to Selwyn Toogood's It's in the Bag shows, and the used to be titled "*The 64-Dollar Question*." In addition to visiting celebrities, Brooklyn School held annual pageants and plays there, and I remember being in one play there called "The Little Cobbler" These were always well attended by the local community.

Movies screened at the Vogue were varied, always getting the latest films from the city cinemas. Children used to watch Gene Autry gallop across the screen of a Saturday matinee, and adults could see Clark Gable in a love story on a Saturday night. Before people had televisions, shows like 'Black & White Minstrel Show', were screened on a Saturday night.

When television brought people back to their own homes for entertainment, the suburban theatres, like the Vogue, the Rivoli and Ascot in Newtown, Kinema in Kilbirnie, Empire in Island Bay, Regal in Karori, all felt the pinch, and all the theatres felt under threat of closing. Fortunately, however, while some closed, others like the Vogue stayed open and were used for live shows as well as movies, and when the Vogue

was put up for sale, Paramount Theatre owners bought it, and turned it around to what we see it today.

Television has lost the appeal it enjoyed in the 1970's through to the 90's, and film buffs have returned to the good old movie theatres, and some suburban places, like the Vogue have capitalised on the resurgence in movie entertainment. It was decided a proper café would enhance the theatre, its popularity soared, and now the Penthouse Café is very well supported.

To the left of the Theatre as you go in the entrance, was a hairdresser, and in later years a real estate agent. Geoff Limn, a long standing Brooklyn resident, occupied the shop until the Theatre owners bought it. On the other side of the entrance was an ice cream parlour for many years, and this is where filmgoers went for their refreshments at the interval. Later it was occupied by a pizza place.

Nowadays, the Vogue, the Empire in Island Bay (the building owner had the foresight to retain the building in its original state when the Empire originally closed, so the transition back to a Theatre was made easier), and the Roxy in Miramar ( again when it closed in the 1960's as the Capitol, the owners retained the Theatre structure), are all enjoying a huge comeback as more and more people prefer a night out at the flicks rather than the run of the mill Sky TV films.

That's all for this month.

Chris Rabey