

WHAT'S ON AT THE BROOKLYN COMMUNITY CENTRE

BEFORE SCHOOL CARE	7.30 to 8.30am every school day for primary school children. For details and bookings phone Adam Hendry on 385 0089
AFTER SCHOOL CARE	3pm to 6pm for primary school kids. Contact Adam Hendry on 385 0089 Email: brooklyn.hp.asc@gmail.com
HOLIDAY PROGRAMME	8am to 6pm during school holidays. Bookings essential. Ph. 385 0089
BROOKLYN WALKERS	We meet outside the Brooklyn Library on Monday mornings. Phone Susannah 384 7412 or Clare 384 9054 for weekly walk details. Walking programmes available from the Brooklyn Community Centre.
BROWNIES	Mondays 6pm to 7.30pm in school terms. Phone Margaret on 389 3028
HIP HOP & DANCE ACADEMY	Hip Hop and Junior Jazz - Mondays 4:45pm to 5:45pm Contact Stephanie on 027 292 9921 stephanieamandalee@gmail.com Fun Fairy Ballet for preschoolers and primary school children. Tuesdays 3:15pm to 6pm. Contact Fiona on 476 7046 or 021 721 020
PILATES	Mondays 9am to 9:45am - Friday classes at 9am and 10am Thursday Pilates and Dance class from 9am Contact Beth via email: renewpilates@gmail.com
THE EKKAALLAM CHURCH	Tamil Christian worship & service, Sundays 10am to 12pm. Email: tec.wgtn@gmail.com or phone Robert on 027 858 9916
TOTS MUSIC CLASSES	Tuesday mornings in the Community Centre lounge from 9:30am. Contact Encore School of Music on 976 8742. Email: info@encoreschoolofmusic.co.nz
INDIAN COOKING CLASSES	Saturday and Sunday evenings. Bookings and enquiries to Anu. Phone: 021 0269 7038 Email: indiancooking@xtra.co.nz
PORSE PLAYSCHOOL	Wednesdays 9am – 11.30 in the hall & lounge Phone Susan on 801 6814 Email: susan.rudd@porse.co.nz
PATRICIA REILLY REMBUDEN	Beginners: Wednesdays 5:30 to 6:15pm or Thursdays 5:00 to 5:45pm Adult Beginners: Wednesdays 6 to 7pm or Thursdays 5:30 to 6:30pm Kardio Power: Wednesdays 7:30 to 8pm (pad work with a partner) Strengthen & Tone: Thursdays 6:30 to 7pm (gentle toning class) Call Patricia on 383 9371 or 027 297 6049
CRAFT CONNECTIONS	Crafters Social Group. Fortnightly on Thursday 10am - 1pm RSA room 26 November & 10 December. Enquiries to brockway@paradise.net.nz
ST JOHN CADETS	Tuesdays 6:30 to 8pm. Contact Carol on 388 3838 or 0274 321 204
TABLE TENNIS	Tuesday mornings at 9am & Wednesday evenings at 8pm Phone Philip on 934 7445 or email: codwg@paradise.net.nz
TAI CHI CLASSES	Thursdays at 6:30pm - \$10 casual or \$60 for 10 classes. Contact Ferne McKenzie on 389 1433 or email: ferne.david@xtra.co.nz
BROOKLYN COMMUNITY INDOOR MARKET	LAST SATURDAY OF THE MONTH. Next market on 28 November - 9.30 to 1pm. Still only \$10 per stallholder, \$5 to share. Tables and chairs provided. Phone Euan Harris on 384 6799 to book.

Copy Deadline for the next Brooklyn Tattler is 30 November 2015

Email: brooklyntattler@gmail.com with your contribution.

The Brooklyn Community Association members accept no liability for the contents which have prepared good faith.

Brooklyn Tattler

What's happening in your Community

Issue 271

November 2015



**Rain, hail or shine it's happening (although we'd prefer the sunshine)
Come along and check it out!**

There will be heaps of food (dumplings, samosas, whitebait fritters, Indian, vegetarian, sausages, fudge, cupcakes to name a few), **drink** (coffee, milkshakes, fruity water, lemonade), **stalls** (toys, bottle store, the new Brooklyn t-shirts, clothes, crafts...) **and loads of activities** (petting zoo, photo booth, football, golf, slingshots, teacher sponge throw, bouncy castle, racing and many more) **for the whole family.**

It will be a great community and fundraising event for a sprung floor in a new hall/gymnasium so it can be used for sports, dance and many other activities. Do join us for a great day!

The Brooklyn Tattler is published monthly by the Brooklyn Community Centre, 18 Harrison St, Brooklyn.

Coordinator's Corner

Hi Everyone

We have just received a box of 2016 Brooklyn Kindergarten Community Calendars packed full of historic black and white photos from Brooklyn's past. These make great Christmas gifts at \$15 each. If you would like a calendar come and see us at the Brooklyn Community Centre. They are also available at the Brooklyn Library, Caribe Café, Jo's Pies and the Resource Centre.

We are all looking forward to the Brooklyn School Fair coming up on Sunday 22 November. The School Fair is held in November every two years. A lot of hard work and planning has gone in to make this year's fair the best ever, so don't miss out.

Our last Community Market for 2015 is on the following week and will feature a Christmas theme. Because of an increase in stallholders we have now opened up the lounge area of the deck to fit everyone in. We have people selling a variety of interesting items that would make great stocking fillers. So come along and support your local Community Market on Saturday 28 November from 9:30am to 1pm.

The exterior makeover of the Brooklyn Community Centre is now complete. Nigel Hall Decorators and his team have done a great job repainting the entire building and we are very pleased with the new fresh look. Come and see for yourself the next time you are in Harrison Street. We are now working with Kapiti Coast based artist Ellen Coup

to paint the Ridgway Afterschool Art class winning mural design onto the front panels.

The countdown to Christmas is on, and once again Adam Hendry our Childcare Programme Manager and his team have put together a Pre Xmas School Holiday Programme of activities from 18 – 23 December including games, movies and a Xmas party. For all enquiries contact Adam on 385 0089 or 021 060 4230 weekdays between 2 – 6pm. Adam is currently finalizing our January Summer School Holiday Programme which is always popular and sure to fill up fast.

Resource consent has been granted to Meridian Energy to replace Brooklyn's iconic wind turbine with a larger version with greater generation capacity. The new turbine is due for delivery in April 2016 and work to dismantle and remove the existing turbine will begin early in December. For more details contact the Meridian wind farm information line on 0800 500 305.

Crafty Volunteers meet monthly at the Brooklyn Community Centre, except December to knit and sew for charities including the Cancer Society, Women's Refuge, SPCA and Hospitals. Their next meeting is on 25 November from 6:30 – 8:30pm. Donations of yarn and material are always sort after. For more details contact Leonie on 389 6381 or visit www.craftyvolunteers.org.nz

Have a great month

Euan Harris - Coordinator
Brooklyn Community Centre & Vogelmorn Hall. Phone: 384 6799
brooklynca@paradise.net.nz

Your MP in Wellington Central
Grant ROBERTSON

220 Willis Street, Wellington
office@grantrobertson.co.nz
04 801 8079



Your MP in Rongotai
Annette KING

172 Riddiford Street, Newtown
rongotai.mp@parliament.govt.nz
04 389 0989




Labour



Authorised by Annette King,
Parliament House, Wellington

CAPITAL MONTESSORI

Preschool 3-6 years • Playgroup 0-3 years



High quality preschool education combining Montessori philosophy with NZ's National Early Childhood Education curriculum.

Experienced & qualified teachers, 20 hours ECE.

Our programme is designed to open your child up to life – nurturing independence, confidence, creativity, tolerance and respect.

Places available now – visit us and see the joy of learning in action.

Call 389-2395 or email office@montessori.school.nz

14 Camrose Grove, Kingston • www.montessori.school.nz



Virtues Project™ International

Bring out the best in you and your child

***Develop your confidence to parent
respectfully & responsibly***

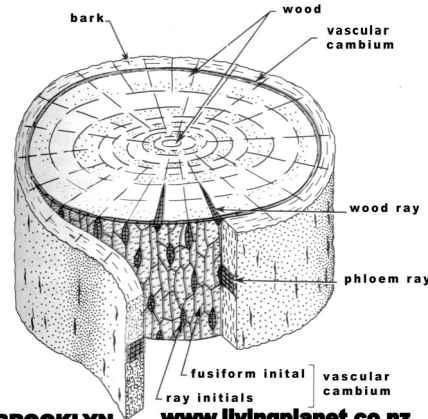
**This workshop, based on The
Virtues Project™ will support
you to:**

- Learn **5 enduring strategies** for parenting
- Build **self esteem** in your children, yourself, and others
- Recognise and **nurture your child's core qualities**
- Set **clear boundaries** within your family
- **Cultivate a culture of respect and responsibility** within your family
- **Resolve conflict peacefully**

To register your interest in a workshop or individual coaching session contact

Kay Miller at kaymiller11@gmail.com

Phone 801 7577 or 027 274 8205



BROOKLYN www.livingplanet.co.nz
0800 4 TREE DR.
971 8583

**Family of 4
looking to rent short
term in Brooklyn from
January to June 2016.**



**Please contact
890 6202.**

Councillor Corner

Goodbye and thank you

About this time of the electoral cycle people are making decisions about their futures. I have made my own and you are the first people I am sharing it with. (Apart from my Facebook page)

I have decided that I will not seek a seat at the Council Table of the Wellington City Council in the next triennium. I decided to make the decision early so that good people who might be thinking of standing can see an opening (yes it can be difficult to break in so an incumbent pulling out does create a vacuum).

I have enjoyed my time and I have the best part of a year still to run until the election. In that time there is an annual budget to complete, and annual report to scrutinise as well as other issues of audit and risk which could affect the good name of the council which will require my close attention.

I have chosen to make the announcement in Brooklyn first as it was the area where I did my first community meeting (well before I got elected) and I appreciated the community engagement that occurred on that occasion. (Council was trying to close your library.)

A bit of me is going to miss the bear pit but after 15 years of accumulated public life it is time to pull up stumps and let someone else with the passion and vigour have a go.

So goodbye and thank you for the opportunity to serve the people of Wellington.

Mark Peck
Lambton Ward Councillor

Message from the Mayor

Kia ora everyone. Wellington is a great place to live, confirmed by the 2015 Mercer Quality of Living survey which ranked us 12th out of 230 cities. Sense of community is an important part of quality of life and Wellingtonians have a heart-warming willingness to welcome refugees to call this city home. At the recent Refugee Hui, people gathered to discuss how to best support new and existing refugees.

The New Zealand Government has announced we will take an additional 600 Syrian refugees over the next two and a half years, with the annual quota of 750 to be reviewed next year. Let's encourage them to double that number! The housing teams from Wellington City Council and Housing New Zealand, the Red Cross, and many other non government organisations including Refugee Trauma Recovery, will be able to support refugees on an on-going basis. The first group of up to 85 Syrians are expected to arrive in New Zealand in January 2016 and come to Wellington in March.

So get out and about and mingle with your community and neighbours this November. See what's on at the Brooklyn Community Centre and take time to enjoy as many of Wellington's free events as you can – and take along someone who needs their day brightening up!

Celia Wade-Brown
Mayor of Wellington

Brooklyn Residents Association (BRAI)

Thank you to those who attended the Brooklyn Residents Association meeting on September 16th including Cr Paul Eagle.

Speed limit reduction (from 70Km/hr to 50 Km/hr) on Happy Valley Rd South of Landfill Rd is out for consultation. This is generated out of residents request due to safety concerns at the intersection with Murchison St. Please make submissions directly to WCC.

The proposed WCC campground on Happy Valley Rd. is out for consultation. Please make submissions directly to WCC.

We are awaiting WCC feedback regarding the bus stop removal at the top of Brooklyn Road.

Feedback on aircraft noise continues to be received. Let us know if this is affecting you.

There was consensus at the meeting to proceed with amendments to the Constitution and Loomio was suggested as an online tool to help facilitate this process. Watch this space.

We welcome your feedback and engagement on these issues or others

brooklynresidentswellington@gmail.com
www.facebook.com/brooklynresidentswellington
Twitter [@Brooklyn_NZ](https://twitter.com/Brooklyn_NZ)

Katie Underwood - Acting Chair:
027 248 2061
Carl Savage - Secretary:
934 9348 or 027 2808934
Sam Donald - Treasurer:
021 0231 3939

VOLUNTEERS NEEDED



We need volunteers from time to time to help with different jobs and events at the Brooklyn Community Centre and Vogelmorn Hall.

If you have time available and are happy to be on a volunteer contact list please give your contact information to our

**Volunteer Co-ordinator
Leonie Flint**

on 389 6381, 022 0855 400 or email flint@actrix.co.nz

Please encourage your family and friends who could do this to contact us. Also ask at work if you can do some voluntary service in paid work time. Many organisations are keen to help in the community.

Thank you!
Leonie, on behalf of
Brooklyn Community Association

Friends of Owhiro Stream (FOOS)

Our September working bee was held in conjunction with Owhiro Bay School, where we had a lovely time (!) grubbing out large blackberry roots. The school grounds encompass not only a section of the stream, but quite a large area of land on the eastern side of it. Parents from the school have formed a group that meets each Wednesday to try and reclaim some of the land from blackberry and other weeds, and replant the stream edges with suitable plants etc., to improve the habitat for any aquatic life that might be around. We were working on a large flat area that had previously been cleared of blackberry by Periodic Detention boys working under Council supervision, the result of which was bare earth that looked all ready to be grassed and planted and turned into a lovely space for children from the school. But lurking underneath were many, many gnarly roots, some already showing little pink buds just waiting to spring to life as long suckers.

So, our brief was to remove as many of them as we could, which we did with enthusiasm, helped by some small people and school parents. The ground was flat, the earth was soft(ish), and the day was sunny - what more could one ask for? Well, maybe a cup of tea and a biscuit or two - certainly always appreciated.

Just upstream from where we were working, an inviting track led some of us down towards the stream and what sounded like a waterfall; where we could look up to what were not quite waterfalls, but a series of very pretty cataracts

sparkling over the rocks. Not surrounded and shaded by native bush, but a lovely sight nevertheless - and an inspiration to keep clearing and planting along the stream. Later that night some members of Friends of Owhiro Stream went on a midnight fish hunt. As in previous expeditions, not too many fish species were found - one or two koaro and a few eels - but on this fine clear evening, with a full moon, they said the experience was 'quite magical'. How lucky we are to have this right on our doorstep, and how careful we should be to help preserve it.

Janet Campbell
for Friends of Owhiro Stream

Kaka Group Community Call



The Kaka Project Brooklyn Hub Steering Group (Brooklyn Community Association, Ministry of Education, Brooklyn School and Wellington City Council) is finalising its contracting processes. A professional is being brought on board to consider the information collected from the community earlier in the Kaka Project alongside other community information, and this will be used to help form potential options for what a Brooklyn Hub could be. Watch this space as we'll keep you informed of progress over the coming months!

History

Adjacent to Ohiro Road heading towards the city, below the old Wellington Bowling Club, lies the Ohiro Community Gardens. On this site for over 80 years, stood a small hospital, known to older Brooklyn dwellers, as the Central Park Hospital. This housed long stay geriatric patients over two wards. In a former life, the building was known as the Ohiro Benevolent Home, and in the early decades of the 20th century, it gained a fearsome reputation, some people comparing it to prison-like features. The patients were referred to as inmates, and the papers of the day reported frequent escapes and police manhunts were put in place.

The building had been established as a home for the 'aged and destitute persons, and was self supporting, when opened in the late 1890's.

Prior to becoming a commercial enterprise, it was the residence of one of the area's earliest entrepreneur's, John Fortescue Evelyn-Wright, who was farming Goathurst Farm, which occupied most of what we now know as Brooklyn.

However the townspeople were keen to see the Benevolent Home flourish, and in September 1898, Sarah Ann Williams, deceased, bequeathed half her will of 160 pounds to Sarah McLeary, Matron of the Ohiro Benevolent Home, and her daughter, Annie C Shaddock, gifted 97 pounds.

Ohiro Home officially came under

the umbrella of "State Farms". The home was staffed by qualified nurses and controlled by a board of Trustees. They advertised for a Master and Matron in January 1907, and the Master was required to act as Secretary to the Trustees. Salary was 250 pounds per annum with board and residence at the home. The premises had their meat supplied by Te Aro Meat Co; and coal from Geo H Scales Ltd; Westport-Stockton, 46/6d per ton.

By June 1908 Miss L McKay was sub-matron at the Home. There were 66 males and 28 females in residence.

But the controversy surrounding the Home continued. It was reported the Ohiro Home was almost like a prison for many of the residents. In April 1905 the NZ Free Lance reported an inmate at the Home had been sent to jail because the Ohiro Home had neglected their duties and allowed him to stray. It also reported there were 83 'inmates' in the home. The Trustees, however, appeared to have made efforts to enhance the lives of the patients. In September 1900 they purchased a magnificent upright grand piano from the Dresden Piano Company.

The police at the time always took an interest in the Home as escapes were quite common, and some of the inmates had been in trouble with the law in the past.

However over the years the Home began to develop more as a caring facility for the older people, though the Trustees did very little maintenance and upgrading of the facilities, and it gradually became very rundown, to the extent it was finally closed in the 1960's and the site was cleared.

Chris Rabey

Lines from the Library

Wellington City Libraries 175th Anniversary

We're turning 175! To celebrate each library is going to represent an era.

On the 21st of November the Central cluster, which are the Brooklyn, Wadestown and Central libraries, will be representing the Victorian Era.

Some Fun Facts:

New Zealand's first public library, the Port Nicholson Exchange and Public Library, opened in 1841. Dr Frederick Knox was appointed to the post of City Librarian in 1840. Knox was a keen collector of odd specimens and in his short time as librarian, he also established a small museum to hold his [bits and pieces].

Unfortunately, the library only operated for a year, before financial pressures resulted in its closure. The library's collection, however, which had grown considerably, was sold on to a variety of organisations to keep providing library services to Wellington's residents. In 1874, a petition was presented to the *Wellington City Council* for a free public library. But it wasn't until 1893 that the council-owned public library was established, and they were able to buy back much of what they had previously sold.

In 1905, Brooklyn Library opened, it was the SECOND Wellington City libraries branch, and was located at 22 Harrison Street (where the playcentre is now).

It moved to its current location (on the corner of Cleveland and Harrison streets) in 1960.

We have SO MANY books that show how much Wellington (and Brooklyn) has changed in the last 175 years. Here are some of them:

- Wellington: biography of a city, Redmer Yska.
- Wellington Through a Victorian Lens William Main
- Early Brooklyn, and Early Brooklyn Revisited, Joy Vickers & Ashton J. Fitchett.
- Wellingtonians from the Turnbull Library Collections, David Colquhoun
- Wellington: A Pictorial History, David Johnson
- Old Wellington in Colour : from hundred-year-old picture postcards, Hugh & Susan Price.

Special edition Library Cards

Pssst – is your library card looking a bit worse for wear? Would you like a new one? We have new cards with a design celebrating the 175th Anniversary, so ask our library staff for details.

Miranda
Brooklyn Library



UPSTREAM Friends of Central Park

The newly formed Bellbird Central pest monitoring group and Illona Keenan, Wellington City Council Biosecurity Technical Advisor, laid three sets of pest monitoring chew cards in Central Park in mid-October. The cards are 18cm x 9cm and are made of two pieces of corrugated plastic sealed together with a peanut butter and x-factor lure in the corrugations. The cards were then nailed to trees in three different environments - alongside the Moturoa Stream, in a lush, bushy area and up one of the drier banks among the pines and deciduous trees, to establish what sorts of pests live in different places.

A week later we checked the cards and compared any chew marks to those of rats, mice, stoats, possums, cats, rabbits and hedgehogs. Interestingly, we found that mice had chewed the cards in all three environments but no other pests were recorded. Despite this we are going ahead with plans to lay traps for rats and stoats; stoats have been sighted in the park and roads that run alongside it and it is hard to believe that there are no rats there – perhaps they are just too well fed to eat the lure!

There may be a rat living near you!! Everyone can help reduce pest predation of our native birds by joining Enhancing the Halo at <http://halo.org.nz/register/>. A member of Friends of Central Park joined 'the halo' after hearing Illona Keenan's talk at our September working bee. Shortly after setting a trap in his backyard in Washington Ave, he caught a rat so large that it could only get its head into the trap! So join Enhancing the Halo and make a difference!

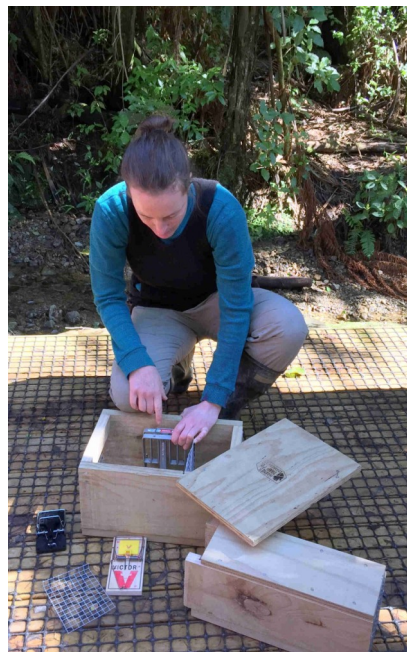
We will be weeding and mulching at our working bee this month which will be the last one for 2015.

Our next Working Bee is Sunday 29 November

Working Bees

Upstream - Friends of Central Park meet on the last Sunday of every month except December and January; join us from 10.00 – 12.00 at The Jetty - follow the path beside the stream from the main gates on Brooklyn Road. Everyone welcome!

For more information, contact Lynne at all.whites@xtra.co.nz or 027 446 5837 or Debbie at debbie_vanh@yahoo.com



ABOVE: "Illona Keenan from WCC demonstrating trap setting".



RESOURCE CENTRE NEWS

36 Jefferson Street

PHONE: 384 4299

OPEN: Weekdays 9am - 4pm

CONTACT US FOR;

MAH JONG;

Monday 1pm - 3pm
Beginners welcome

SPEECH THERAPIST

Monday & Wednesdays 9am - 1pm
Phone: 383 5415

COMMUNITY LUNCH;

Tuesday 12noon - 1pm
Inexpensive lunch for everybody
Children welcome

SPINNERS and KNITTERS:

1st and 3rd Thursdays 1 - 4pm.

PODIATRIST;

Every second Friday
9.00am - 11.30am

Ph. for an appointment on 384 4299

Office/clinic/therapy room available for hire. Enquiries to Jenny on 384 4299

FRIDAY CIRCLE:

Cars will collect you if needed.

Programme:

Craft activities	9.30am
Morning Tea	10am
Lunch	12noon
Arthritic Exercise	1.30pm
Guest Speaker	2pm
Afternoon Tea	3pm

Speaker line up for November and December

20th Nov Sylvia Stump
"Our new volunteer -

shares her inspiration"

27th Nov Mary Snowden
"The Dominion Post Tour"

4th Dec Euan Harris
"Nostalgic Films"

11th Dec By Invitation
"Christmas Lunch for 28"

Thank you to Jarvis & Lowndes for their prompt electrical work that we needed done at the Centre, it is great to have you in our community.

Our thoughts are with Val who lost Con, a much treasured friend.

We are holding our annual THANK YOU PARTY for volunteers, helpers, supporters and neighbours on Friday the 27th November from 6pm - 7:30pm. ALL WELCOME. Thank you for your support during the past year.

If you are thinking of having a Christmas gathering, we have good indoor and out door space available for your needs, ring Jenny on 384 4299. We also have high chairs, a porta cot and wheel chair for hire.

Our wonderful drivers from Driving Miss Daisy are available to take your bookings over the Christmas period. Please phone 384 8344. Their service is fantastic and the drivers are so caring. We are lucky to have them in our community.

Kirsty our podiatrist will have her last clinic for the year on the 11th Dec she may also be available on the 18th Dec depending on bookings.

Jenny Swan
Co-ordinator

WHAT'S ON AT VOGELMORN HALL

Corner of Mornington Road & Vennell Street

SPIRIT TAEKWON-DO CLUB Sunday mornings 9.15am to 12:45pm
Thursday evenings 4:45 to 8:45pm
Contact Louise on 021 585 119 or email: louise@spirit.net.nz

FELDENKRAIS CLASSES Monday 10am to 11am & evening 7pm to 8pm
Wednesday mornings 10am to 11am
The first class is free for beginners
Contact Toni on 475 3355 or temcwhinnie@gmail.com

TAMARIKI YOGA FOR KIDS Classes for 8 - 12 yrs. Monday 3:45 - 4:45pm
Contact Janelle 977 4991 or 021 0229 2806 or tamarikiyoga@yahoo.co.nz

KARDIO POWER Monday evenings 5:40 to 6:10pm
STRETCH & TONE CLASS Monday evenings 6:10 to 6:40pm
Contact Patricia on 383 9371 or 027 297 6049

AEROBIC DANCE Tuesday & Thursday mornings 9:15am to 10:15am
Contact Gill Clark on 021 100 4851

POSITIVELY ZUMBA Tuesday evenings 7:15pm to 8:30pm
Contact Beth via email at: positivelyzumba@gmail.com

FIONA HAINES DANCE Wednesday afternoons & evenings 4:45 to 7:30pm
Contact Fiona on 476 7046 or 021 721 020 or f.haines.dance@gmail.com

KIDS ART Thursday afternoons from 3pm to 4.30pm
During school terms

BABY SENSORY CLASSES Fridays from 9am to 1:30pm
Contact Mel on 022 510 1987 or wellingtoncitynz@babysensory.com

WELLINGTON NAGINATA Women's Martial Arts Group - Fridays 5:30 to 7:30pm
Contact Alice at henryjonesjnr@yahoo.co.uk

WELLINGTON IAIDO TRAINING Learn the art of drawing and cutting with the Japanese sword. Training Tuesday 6pm to 7pm and Saturday 3pm to 5pm.
Contact Cam on 021 263 0361 or info@wellington-iaido.com
www.facebook.com/wellingtoniaido

The Vogelhorn Hall can be hired for classes, groups and functions.
Contact Euan Harris on 384 6799 or email: brooklynca@paradise.net.nz

School News

The last school term of the year is now well underway and our children's thoughts will soon be turning to Christmas and long summer holidays.

Hard to believe we are almost at that time of year already.

All our schools participated in the recent "Drop, cover, hold" national earthquake drill. Of course the students are all dab hands at the drill as the schools all practice it regularly.

There was lots of support for the All Blacks with black out days where teachers and students wore black to support the team leading up to the big final. It must have done the trick with the resounding win for the boys in black.

Renovations have been happening at both St Bernard's and Brooklyn. St Bernard's have had their hall ceiling replaced, lighting work done and heat pumps installed. Brooklyn had roofing and drainage repairs done over the holidays. They also had their mural replaced on the Tui playground so it's farewell to Tin Tin and hello to a great bird mural depicting the Tui, Kiwi, Takaha and Moa syndicates. Deb Mansfield did a great job creating it and the children love it.

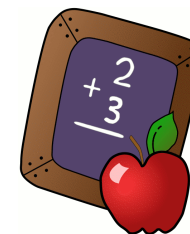
Ridgway School students are busy preparing for their end of term school production and their annual "Ridgway's Got Talent" showcase. St Bernard's School students enjoyed a train trip to Naenae Intermediate where they participated in a ukulele

concert, and Brooklyn School are busy preparing for their school fair on 22 November.

School finishes on 16 December for St Bernards students and 17 December for Brooklyn and Ridgway students.

More news next month.

Julie Seevens



New Lions Club Brooklyn Area

Want to make new friends to work together with to give something back to the community?

Come join us as inaugural members as we make the most of this wonderful opportunity to shape our own club to meet the needs of our community.

To find out more about Lions go to www.lionsclubs.org.nz.

For more information contact
Alice Dickson
by email
alice_erdickson@hotmail.com
or phone 027 725 4195

VOGELMORN HALL & GREEN for all your festive events



Consider Vogelmorn Hall and Green for your staff Christmas function or family celebration.

Generous capacity for up to 120 people the Vogelmorn Hall includes a gently sloping stage (right) ideal for performance.

With a polished wooden floor; spacious open kitchen with oven and hot water; modern bathroom facilities and electric heating, Vogelmorn Hall is an ideal venue for all occasions.

Address: Corner Mornington Road and Vennell Street, Brooklyn.

Hire rates: \$23.00 per hour incl GST (commercial and one off groups)
\$17.25 per hour incl GST (community groups and regular users)

Vogelmorn Green

Adjacent to Vogelmorn Hall on the corner of Mornington Road and Vennell Street, Brooklyn. Opposite the Vogelmorn Tennis Club room and courts. Access through gates at the front and rear of Vogelmorn Hall.

Hire rate: \$14 per hour if hired on its own.

Capacity: 200 people. Vogelmorn Green has a soft surface so is suitable for low impact activities; football, tennis, fitness, children's parties. Flat/sports shoes or bare feet essential.

BOOK NOW

Contact: Euan Harris, Coordinator. Phone: (04) 384 6799 or
Email: brooklynca@paradise.net.nz www.brooklyncommunitycentre.org.nz



The Kung Fu School

少林南北拳
Strengthen
The Will

shaolinkungfu.co.nz

Adults, Teens and Children - Learn Traditional Chinese Martial Arts

For: Fitness - Self Defense – Style – Friendship - Class Atmosphere - Family - History – Values - Confidence

Shaolin Gao Can Mun Nam Pai Chuan owes its origins to the teachings of Monk Seh Gao Can who became the abbot of the Shaolin Sion Lim Temple in Singapore.

The system includes:

- Kicking, punching
- Locking, throwing, ground work
- Shaolin animal styles and weapons
- Chi gung, Tai Chi – and more

	<u>Childrens Classes</u>	<u>Adults and Teens Classes</u>
Mondays:	5.00 – 6.00 pm	6.00 – 8.00 pm
Fridays:	4.30 – 5.30 pm	5.30 – 7.30 pm
Saturday:	9.00 – 10.00 am	10.00 – 11.30 am

Contact: Scott Willson 021 1875006 or wellington@shaolinkungfu.co.nz
Or just come along to try a free class - wear T shirt and long trackies.

Tanera Park Hall, Tanera Cres (off Ohiro Rd), Brooklyn. www.shaolinkungfu.co.nz

Looking to sell your home? Or buy one? Look local think global. I have been selling property for 14 years (resident for 16 years). Harcourts has been selling property since 1888. Results and hard work count.

Carl Savage

Licensed Salesperson REAA 2008;
call anytime 803 1767 / 027 2808934

Carl.savage@harcourts.co.nz



CARPET LAYER

Installation of new or second hand carpets.
Relays, repairs and maintenance.
All materials can be supplied. Free quotes.

Contact **John** on 0274 426 915 or 381 2216

Vogelmorn Community Group Update

The Vogelmorn Community Group is delighted to be awarded first place in the inaugural Rotary Club of Wellington Social Enterprise Kick-start, run in conjunction with the Ākina Foundation!

The Vogelmorn Community Group is operating the Bowling Club buildings at 93 Mornington Road as a mix-usage community space for artists and the community with rehearsals, yoga classes, public talks, and a co-working space.

Contact Jo Randerson for details. Email: jo@barbarian.co.nz, or just pop in!

Koha Yoga Classes

Koha yoga classes with Sarrah Jayne – Wednesdays at 9.15am

Sarrah is a qualified hatha/yoga therapy style teacher who loves teaching community classes. Suitable for all levels of experience. Mats available, bring your kids if you like - koha entry.

Organic vege dropoff

VBC is providing a weekly drop-off point for fresh organic vegetables at affordable prices from Wairarapa Eco Farm. To sign up please contact Josje via www.wefts.co.nz.



Refresh Restyle Re-energise your home

Affordable interior design that starts with what you have

Re-energise: Use your existing furniture in new and inspiring ways

Restyle: Source furniture and accessories that work with what you've got

Refresh: Find fabrics and colours that bring your spaces together

Call Nicci today
to discuss your
home interior needs:

04 8311488

room | space
design
Love the home you're in!

www.roomspacedesign.co.nz

Community Activities on Washington Avenue

Want to learn, grow and have fun!

Check out the wide range of activities for a broad spectrum of the community run at St Matthew's Brooklyn.

These range from the traditional church service on Sundays, other parish run programmes, to a wide range of community group activities.

Messy Church: a family orientated session

Date: 5th December 2015

Time: 4:00pm- 5:00pm followed by a light meal

Theme: Christmas is coming

Venue: St Matthew's Church, 96 Washington Ave, Brooklyn

Messy Church is a time where families of all sizes have fun, meet others from our community and share Christian stories and values with their children in an active, no-pressure environment.

It's fast, fun, friendly, with lots of activities to choose from and not much sitting still for those who want to get involved in all the activities.

It's also relaxed, you can choose to stay with one or two activities and enjoy some relaxed exploring as well. Suitable for all ages (0-100+) and all sized families (1+).

A koha is appreciated, if you are able, to assist with the provision of this programme.

Feel free to bring a non-perishable food item also for our food basket that supports the work of the Wellington City Mission Foodbank. With Christmas coming our way, treat food and presents, as well as the basics is always appreciated by the Foodbank.

It helps us with providing this programme if we have an idea of the numbers attending. If you are able to, please text Lynley on 021 1366 969 or just pop along.

Need a place to host a regular activity or one-off event?

St Matthew's has flexible spaces available for one-off and regular activities. It is well appointed on the rise on Washington Ave within easy access from neighbouring suburbs. If you are interested in checking out what is available or chatting over your needs, please contact our office on 389 3470, drop in on a Tuesday or Friday morning to have a look or leave us a message on our website www.stmatthewsbrooklyn.org.nz



Light Party

The light party held on the 31st October was a wonderful way for an event to provide a positive alternative to trick or treating. There were party games, lights of all descriptions, fun and laughter abound.

It was lovely to see so many people's favourite positive dress-up costumes adding a whole lot of fun!



Jason Paul - Wellington Region
Emergency Management Office

Building a resilient Wider Brooklyn

Brooklyn residents have been talking with the Wellington Region Emergency Management Office about how we can support each other in our community during and after a disaster such as a major earthquake.

By the time this edition of the Tattler is published, residents and businesses in Brooklyn, Vogeltown, Mornington and Kingston will have come together at the first of three sessions (held on November 10th) to discuss this.

At this session GNS Science will have outlined that the main significant risk to this area is an earthquake and how that would impact us. We will have discussed how there will be very little support from the emergency services in the first few hours or days after a major earthquake, and hence the need for the community to come together to support each other.

The Wellington Region Emergency Management Office will then have started to lead us through a process to start to develop a community emergency response plan that will continue over the following two sessions. We'll have looked at the vulnerabilities in wider Brooklyn to see if there are any risks we could reduce or need to be aware of. We will discuss the purpose of a Community Emergency Hub where the community can gather to coordinate its efforts, and we will run a little table top exercise to consider how we would address issues like making sure everyone is safe and has food, water, and shelter.

At the next session we will identify the resources in this community (both material and people) that could contribute to a positive community led response and discuss what is important to this community when considering how to recover from a disaster. In the last session we will look at what we can do to make our community more resilient.

Please join us at St Matthew's Church, 98 Washington Ave, Brooklyn at 7pm on November 24th and December 8th, we look forward to seeing you there!



Brooklyn Local History Group

The next Brooklyn Local History Group meeting is at 2pm Saturday 5 December in the Brooklyn Library on the corner of Cleveland and Harrison Streets. Everyone is welcome to attend.

Please contact Sharon for details: 027 634 4455 or 388 8088 AH

St John Youth Division and Penguin Programme

For 6-18 year olds, weekly sessions term time with some weekend camps and fun activities. Both programmes are structured to develop life skills and self discipline in a fun, friendly environment.

Penguin Programme (6-8 yr. olds)

Meet at St Matthew's Church Lounge, Washington Ave, Mondays 3:30 - 4:45pm.

Youth Division (8-18 year olds)

Meet at Brooklyn Community Centre
Tuesdays 6:30 - 8:00pm.

You are welcome to come and have a look at what we do anytime. It's helpful if you make contact with one of the leaders first, to ensure they are not away on a trip during the session that you want to come and have a look at.

Leader contact is Karen for Penguins on 389 4060 and Carol for Youth on 0274 321 204. www.stjohn.org.nz

New Tattler email address

The Tattler email address for all contributions has changed. Please update your email address to brooklyntattler@gmail.com



An OSCAR Approved programme for 5-13 years olds.

- Before/ After School Care
- Holiday Programmes
- Affordable prices.
- Pick up/drop off available

St Bernards School Hall
(40 Taft St)

For more information

admin@enjoychildcare.co.nz

Brooklyn Kindergarten 2016 Historical Calendars \$15 each

Now on sale at Caribe Café, the Brooklyn Library, Jo's Pies, the Resource Centre and Brooklyn Community Centre.

Each calendar contains historic black and white photos of Brooklyn and surrounding areas.

A great Christmas gift idea for family and friends.

You can also buy a calendar at the next Brooklyn Community Market on Saturday 28 November from 9:30am to 1pm, by phoning 022 104 1255 or by emailing: brooklynkindergar.ten.calendar@gmail.com

GROUP ROUNDUP continued...

Brooklyn Scouts

Scouting is for boys and girls who love adventure plus. We meet in the Scout Hall in Harrison Street, Brooklyn.
 Keas: 5-7 years, Tuesdays 5.30-6.30pm
 Cubs: 7-11 years, Mondays 6.30-8.00pm
 Scouts: 11-14 years, Tues 7.00-9.00pm.
 Venturers 14-18 years, Thurs 7.-9.00pm
 For more information contact Gillian Boyes, gillianmay@paradise.net.nz
 phone: 972 9904

Brooklyn Garden Club

The Club meets at 7.30pm on the first Wednesday each month at the Brooklyn Resource Centre, 36 Jefferson St. Come and hear interesting and informative guest speakers, share gardening tips and plant cuttings, and enjoy the company of our small friendly group. New members and new ideas are always welcome. For further details contact Barbara on 389 4307.

Turbine Talkers Toastmasters Club

Turbine Talkers is the local chapter of Toastmasters International. We hold fortnightly meetings to teach and practice the skills of effective communication in a supportive learning environment. Turbine Talkers meets every 2nd Tuesday, at St Matthews Church, Washington Avenue. For details phone Deb on

027 444 9622 or email
dlambie@live.com.
<http://6879.toastmastersclubs.org>

Brooklyn Brownies, Guides & Pippins

Brownies meet Monday evening during school terms, from 6.00-7.30pm, in the Brooklyn Community Centre, Harrison St. We welcome any girl between the ages of 7 to 9.5 years of age to join Brownies for fun, friendship and other activities. Ph. Margaret 389 3028 for details.

Brooklyn Pippins meet Monday evening during term time 6-7pm at the Reformed Church, end of Harrison St. Contact Nicola Burdon: 971 1265

Brooklyn Guides meet Mondays 6.30-8.00pm at Reformed Church, Harrison St. Ph. Kathryn Marsh on 802 5049

Friends of Owiro Stream

Drivers down Ohio Road will have noticed the vast improvement over the past few years to the Owiro Stream and its environs achieved by this local group. Work is ongoing and if you would like to find out more about it, call: Martin 389 8995 or Janet 385 2077

Upstream - Friends of Central Park

Our working bee is the last Sunday of the month from 10am to noon. Meet at the picnic table next to the big bridge, 2 mins from the main gate. Come along for great conversations, meet new people, fab morning tea provided and contribute to the care of Central Park! No formal meeting in January. Contact Debbie for informal meeting times.

Email: debbie_vanh@yahoo.com

We are Wellington's only co-educational Independent primary school

We educate boys and girls from Preschool through to Year 8

We have dedicated classes for each year group – NO composite classes

We have limited spaces available for 2015

We are St Mark's



Call now to view our school
Phone 385 9489






Brooklyn Early Childhood Centre is open for new enrolments

We provide high quality care for children aged 12 months (walking) until school age. We have a team of experienced, qualified teachers and maintain low child to teacher ratios.

Your child will **grow through play, learning with love** from teachers who care.

We're open 8.30am – 2.30pm, Mon-Fri at 96a Washington Ave. We'd love to meet you!

T (04) 389 5683 @ brooklynecc@xtra.co.nz www.brooklynecc.org.nz or facebook.com/brooklynecc



Katie Underwood

027 248 2061 or 04 894 3717

Leaders Real Estate

Call me to sell your home!

Local Salesperson, Local Knowledge.

kunderwood@leaders.co.nz
www.leaders.co.nz/katieunderwood

GROUP ROUNDUP

Brooklyn Food Group

The Brooklyn Food Group have a passion for local food and community. We run workshops, shared gardens and a community orchard.

Contact us to get involved or drop in to our regular working bee at the Brooklyn Orchard on the first and third Sunday of the month from 5.30pm at the end of Harrison Street. Everyone very welcome.

thebrooklynfoodgroup@gmail.com and www.facebook.com/BrooklynFoodGroupNZ

Brooklyn Mainly Music

In a warm welcoming environment, volunteers at local churches run 30 minute music and rhythm sessions that develop gross and fine motor skills, and allow caregivers and youngsters to have a great time interacting together. After the session, morning tea is provided which allows for friendly adult conversation and child play time in a supportive environment. Mainly Music runs in two Brooklyn locations during school term time. Join us in the session that suits you best or attend both.

Wednesdays - starting 10:00am at Reformed Church, 34 Harrison St. Contact Rachel 022 407 9652
www.wellingtonreformed.co.nz

Fridays - starting 9:30am at St Matthew's Church lounge, 96 Washington Avenue. Contact Lynne 389 3424
www.stmatthewsbrooklyn.org.nz

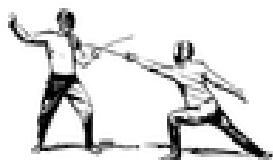
Brooklyn Smallbore Rifle Club

If you are aged 14+ come and have a go! We have a special \$15 Introductory Package which includes personal guidance on firearm safety and range etiquette, coaching, use of specialised club equipment, targets and ammunition for two rounds of shooting (13 shots per round).

Training and casual shooting is on Sundays 4.30pm to 6.00pm from mid-March to early October at the Royal Tiger Range, 131 Russell Terrace, Newtown, so give us a call or drop us an email and we'll sort things out for you (Dianne Grain, 0274 449 641, d.grain@xtra.co.nz), or visit our website www.bsrc.org.nz.

Wellington Swords Club

Located at Tanera Bowling Club. Fencing classes: Tues, Wed, Thurs from 5.30-8.00. Sat. 9-12. Vicki Lamb - Head Coach Ph.970 7496 evenings or email: Bishop.lamb@paradise.net.nz
Venue hire: Upstairs sprung wooden floor 27m x 12m. Modest kitchen with domestic stove. Toilets up and down. Downstairs - concrete floor, lower stud. Max 150 people. \$15 an hour casual. Party hire neg. rate \$150 weekend night.



Hockey for Kids

Come and practice with us during summer at the Brooklyn Bowling Club astro turf at Tanera Park (8 Tanera Crescent, Brooklyn).

**Every Friday from 4-5pm.
For yr1-3 (and yr4 in 2016) and new entrants.**

Give it a go!

Just turn up on practice day and we take it from there.

More info about us: brooklyn-geckoshockey.weebly.com

Brooklyn Toy Library

Brooklyn Toy Library offers a wide array of toys to borrow for children aged 0 to around 7 years. Toys and playing allow children to develop their physical, mental and social skills. Borrowing them allows parents to provide variety without needing to buy and store all those toys!

We're open during term time on Fridays 1:30-3:30pm and Saturdays 9am-12noon. Memberships per family start at \$45 for 6 months and \$75 for a year. There are no extra toy hire fees. We're located in the Rear Prefab at the Capital Montessori School, Camrose Grove, Kingston. Email: brooklyntoylibrary@hotmail.com
Web: www.brooklyntoylibrary.org.nz/
Facebook: <https://www.facebook.com/Brooklyn-Toy-Library-1413096478974270/>

Brooklyn Table Tennis

The Brooklyn Table Tennis Club plays from 9am on Tuesday mornings and 8pm till late every Wednesday.

We are a small friendly group, welcoming new members of all ages. We have three tables, good lighting in a pleasant hall. Balls are supplied and a number of club bats are available for use. For information phone: Philip on 934 7445
Email codwg@paradise.net.nz

Brooklyn Walkers

Brooklyn Walkers meet on Monday mornings outside the Brooklyn Library. The walks are varied covering most of Wellington. Our group is full of friendly people so join us. For more information call Susannah: 384 7412 or Clare 384 9054. Walking Group programmes are available from the Brooklyn Community Centre office.

23 Nov - Pencarrow walk, Catch 9:38am No.7 bus, then 10:07am No. 83 bus at the railway station to Eastbourne depot and then walk towards Pencarrow for 1 hour. Return to Eastbourne for coffee.

30 Nov - Wrights Hill. Catch 9:09am No.7 bus then 9:29am No.3 bus from the last stop on Lambton Quay to arrive in Karori at 9:45am. Start at Woodhouse Ave, walk to Zealandia via Wrights Hill lookout to Waiapu Road.

7 Dec - Walk to Adelaide Road through High School. Catch No. 3 bus to Kilbirnie then walk around bays to city.

14 Dec - Crofton Downs, Trelessick Park, Kaiwharawhara, city. Catch 9:18am No.7 bus then 10:02am train.

21 Dec - Central Park, Tanera Gardens, Aro and Norway Streets, Kelburn, city.

Continued over...